

INVERLYNN

The Jalna

One of the most popular shows on the CBC network in 1971 was 'The Whiteoaks of Jalna' and the house at Inverlynn was used as it's backdrop. The series was based on three novels by Mazo de la Roche and described the lives of an aristocratic Southern Ontario family over a 100 year period. The author actually based her books on a Clarkson country house that was owned by James Beveridge Harris and Inverlynn house was a perfect match. Interestingly, the filmmakers had to photograph the house through trees so the viewers wouldn't know it had updated windows or even a t.v. antenna.

Elevation A

3699 sq.ft.

Available on Lots

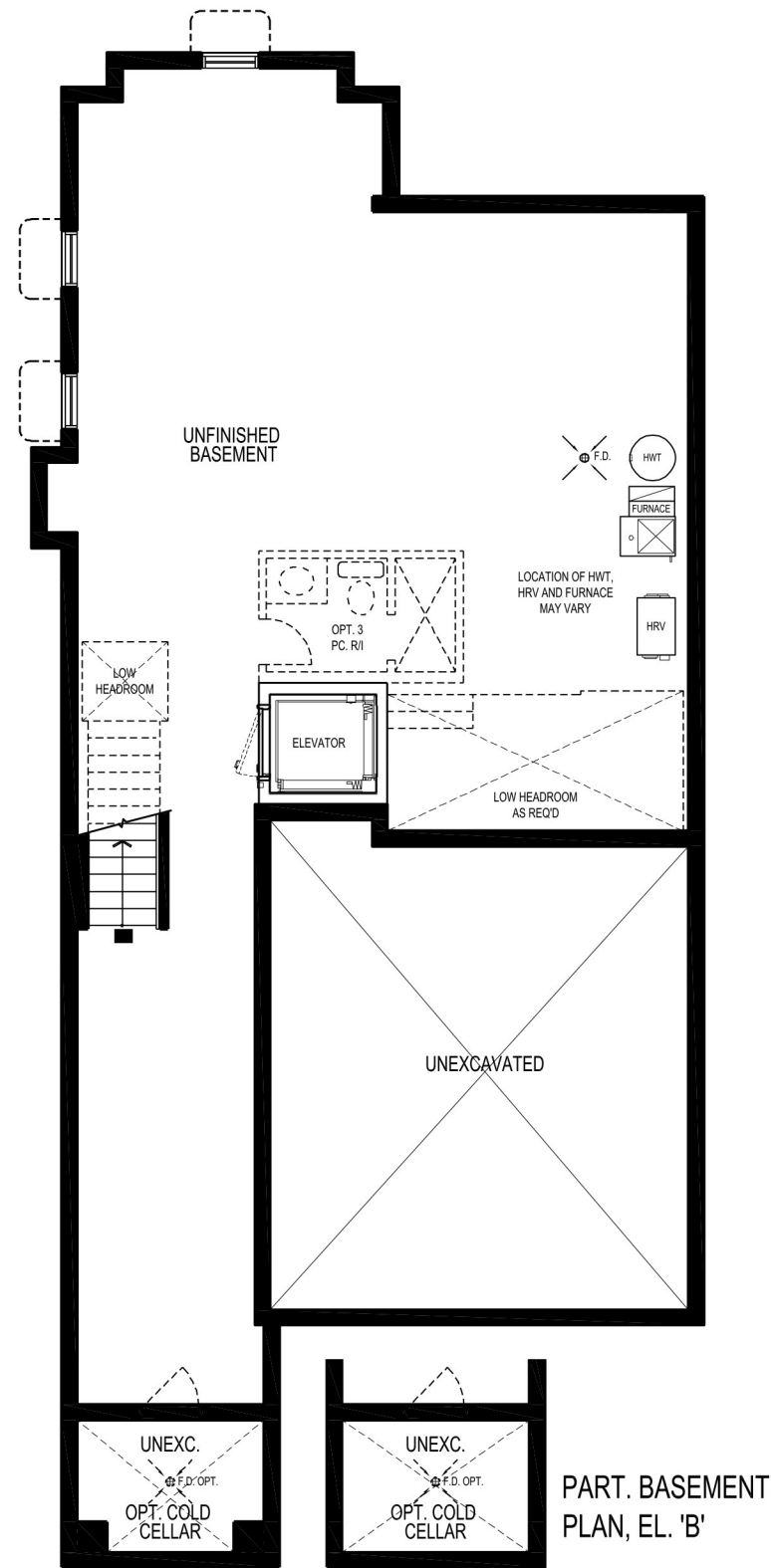
5, 6, 7, 8, 9, 10, 11, 12, 13



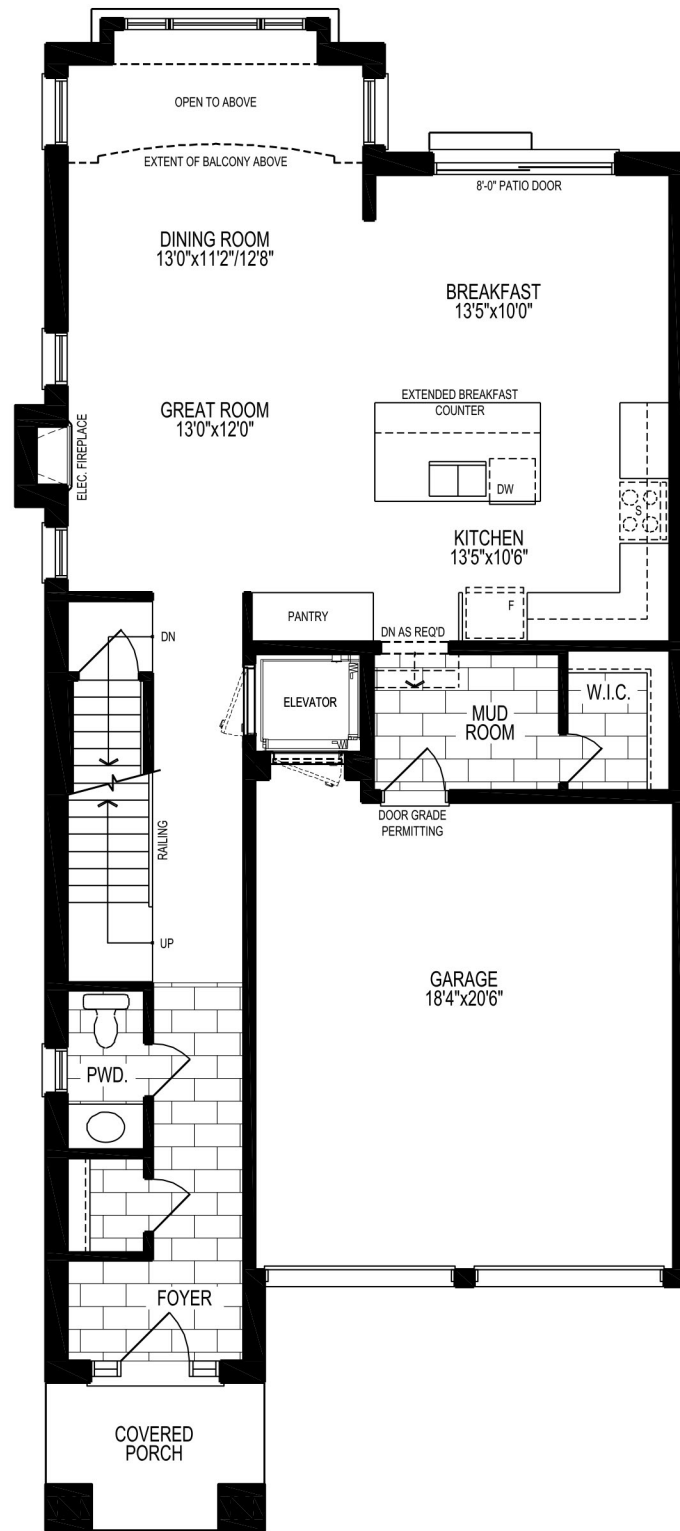
Elev. B, 3691 sq.ft.



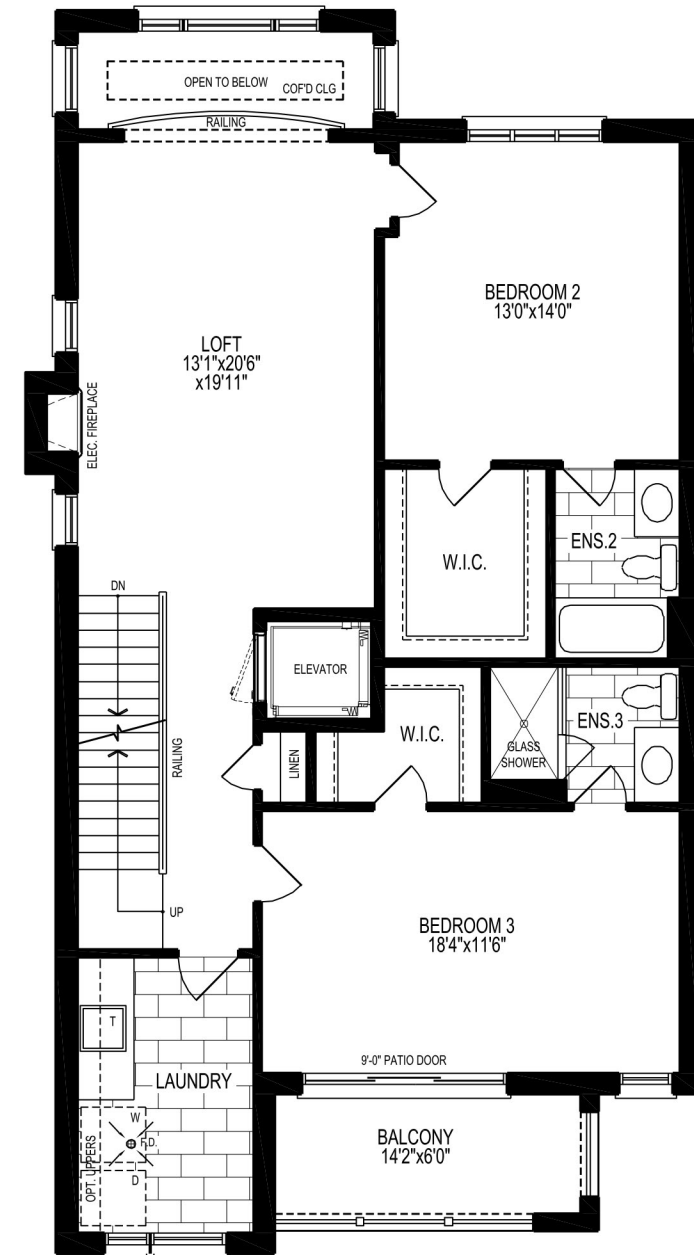
Elev. A, 3699 sq.ft.



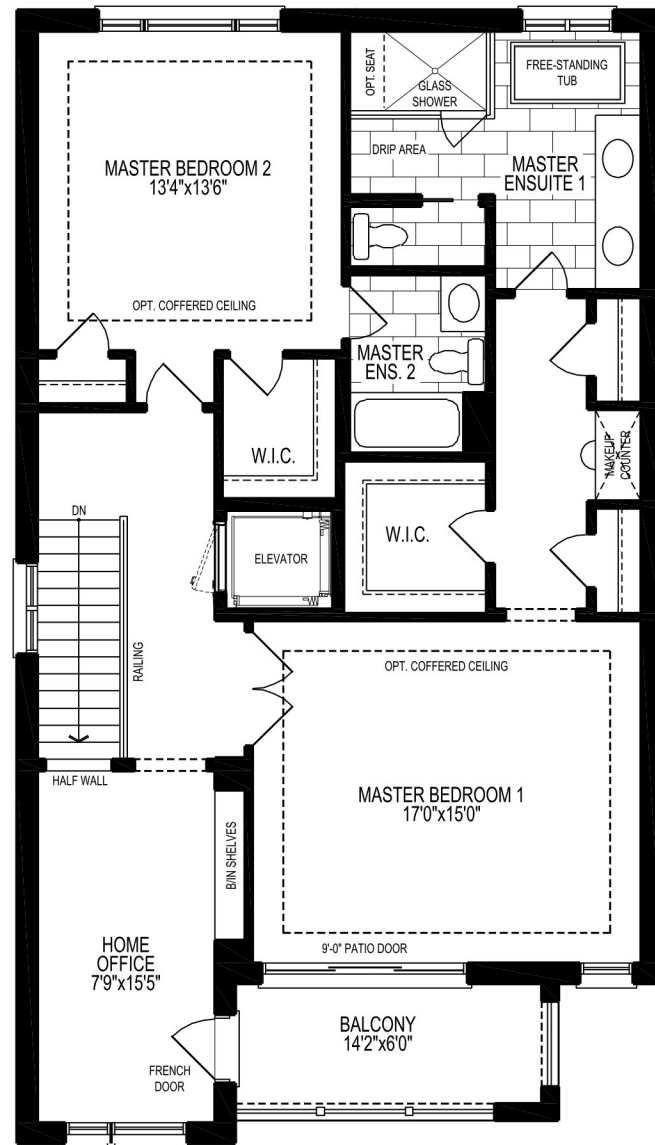
BASEMENT PLAN, ELEV. 'A'



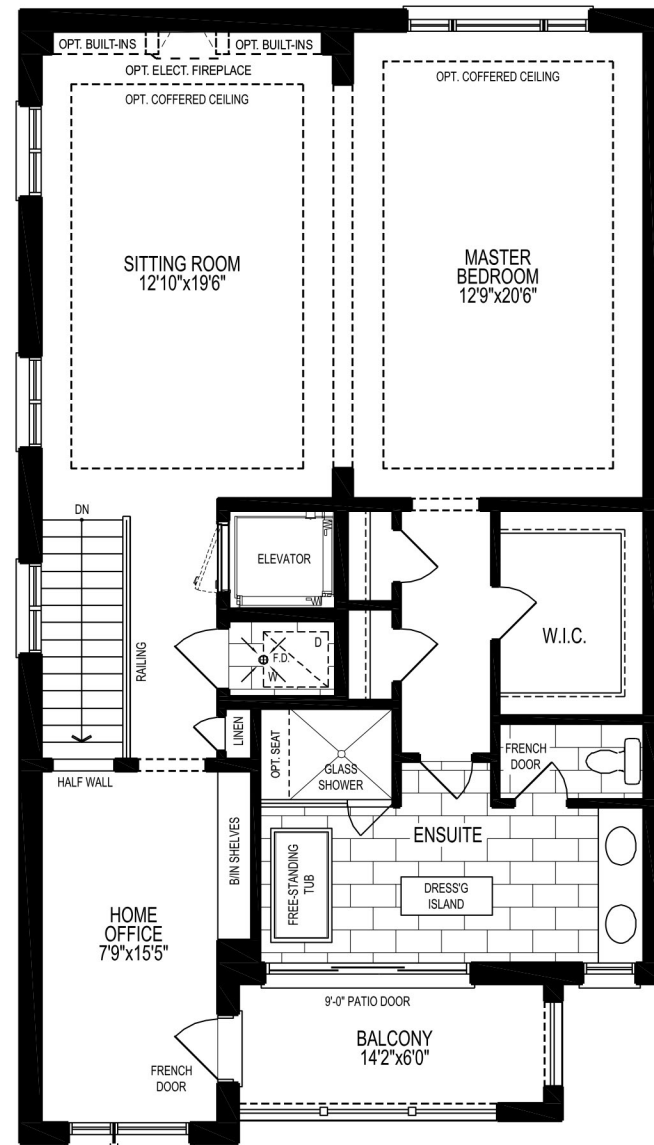
GROUND FLOOR PLAN, ELEV. 'A'



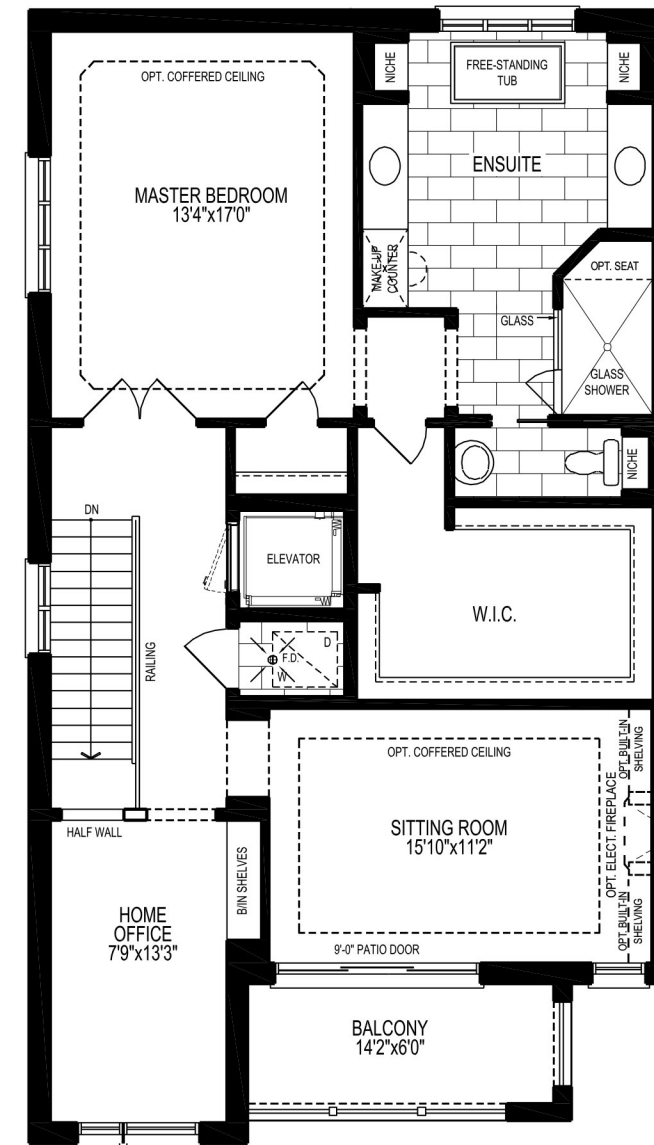
SECOND FLOOR PLAN, ELEV. 'A'



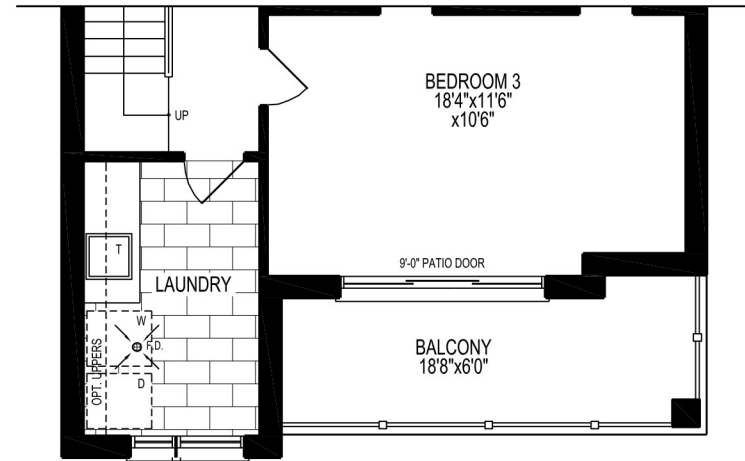
THIRD FLOOR PLAN, ELEV. 'A'



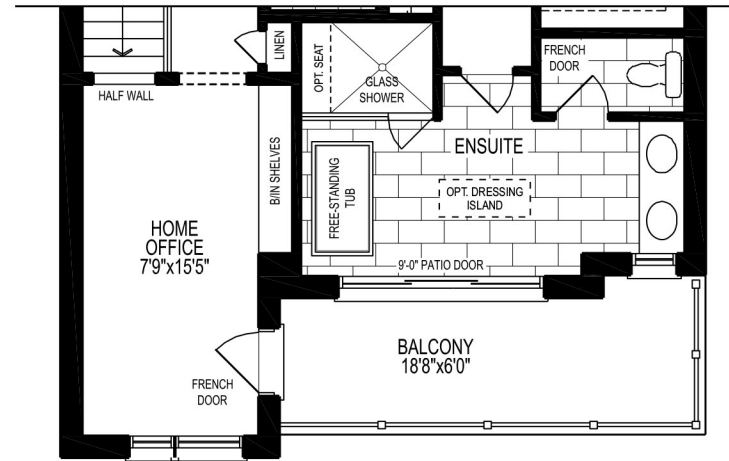
OPT. THIRD FLOOR PLAN #1, ELEV. 'A'



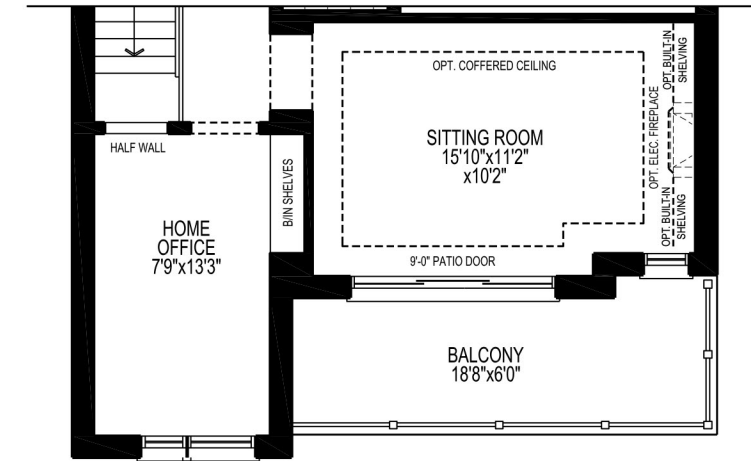
OPT. THIRD FLOOR PLAN #2, ELEV. 'A'



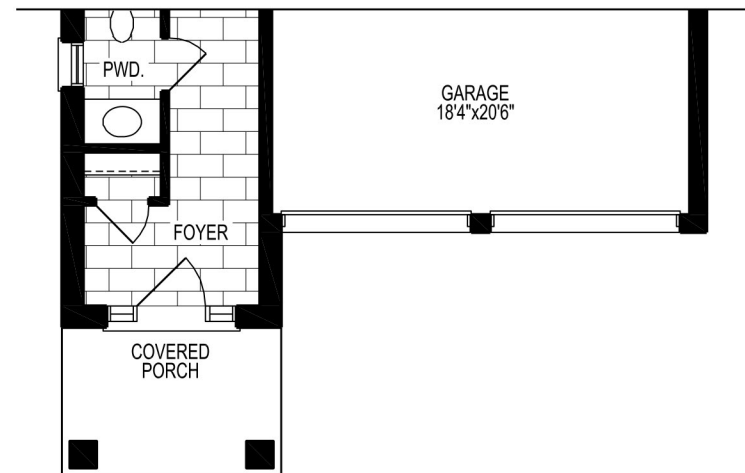
PART. SECOND FLOOR
PLAN, ELEV. 'B'



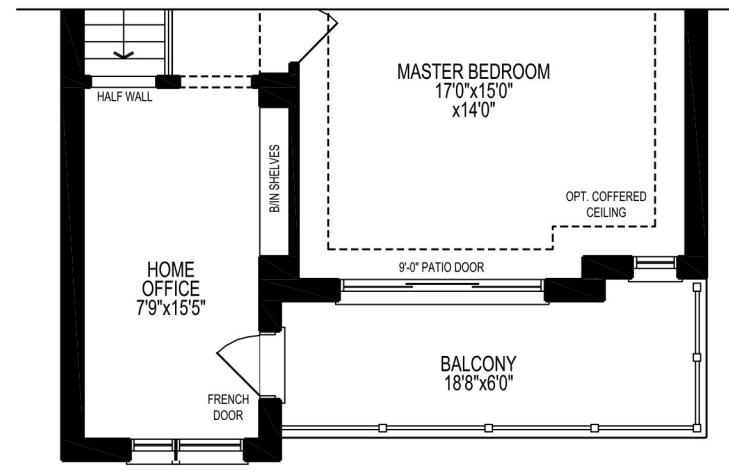
PART. OPT. THIRD FLOOR
PLAN #1, ELEV. 'B'



PART. OPT. THIRD FLOOR
PLAN #2, ELEV. 'B'



PART. GROUND FLOOR
PLAN, ELEV. 'B'



PART. THIRD FLOOR PLAN,
ELEV. 'B'