

INVERLYNN

The Sayer

The Sayer family lived in the home that Mazo de la Roche used as the setting for her popular 1927 series, 'The Whiteoaks of Jalna'. In the book the house was named 'Benares' by the main character Philip Whiteoak who comes to Canada after being garrisoned with his regiment in India. This Clarkson country house was originally owned by the direct descendants of James Beveridge Harris who originally built the home. The writer who loosely based her stories on this house regularly visited the home and had observed the family over three generations. One of the most interesting facts about the novels was the author having to add a third storey to fit in all her Whiteoaks characters!

Elevation A

4637 sq.ft.

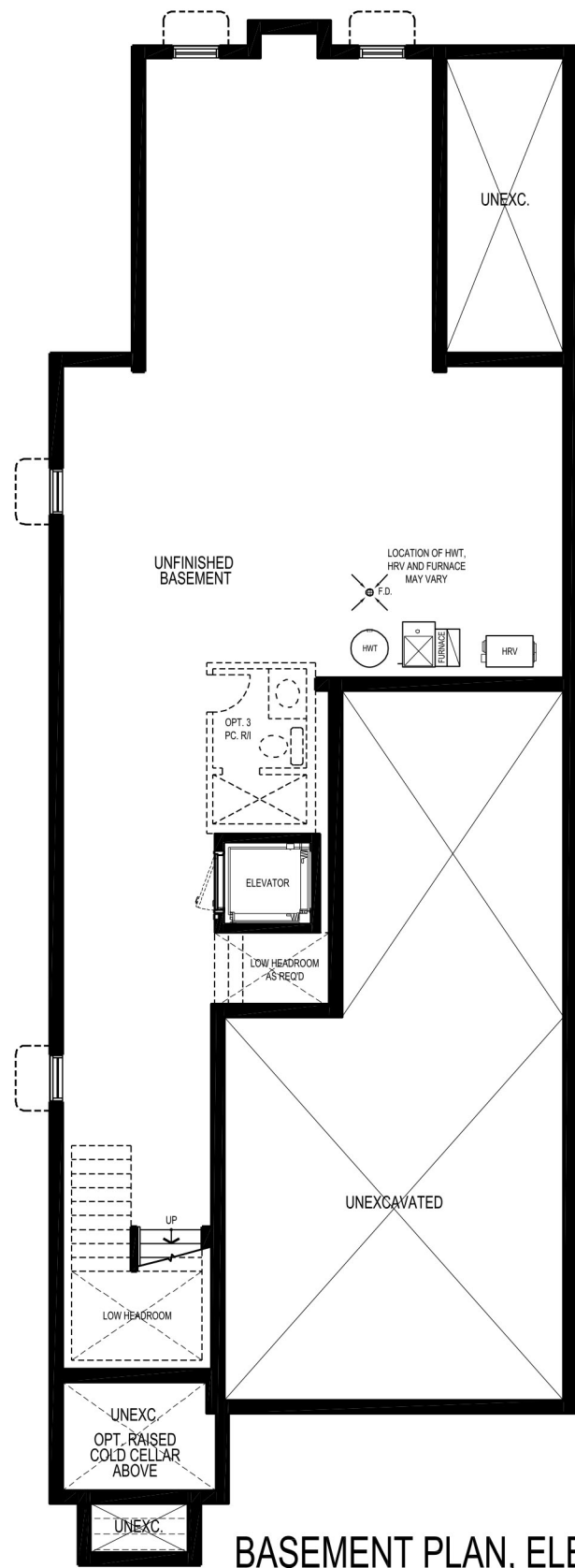
Available on Lots 5, 6, 7, 8, 9



Elev. B, 4632 sq.ft.
Elev. B, Opt. 4353 sq.ft.

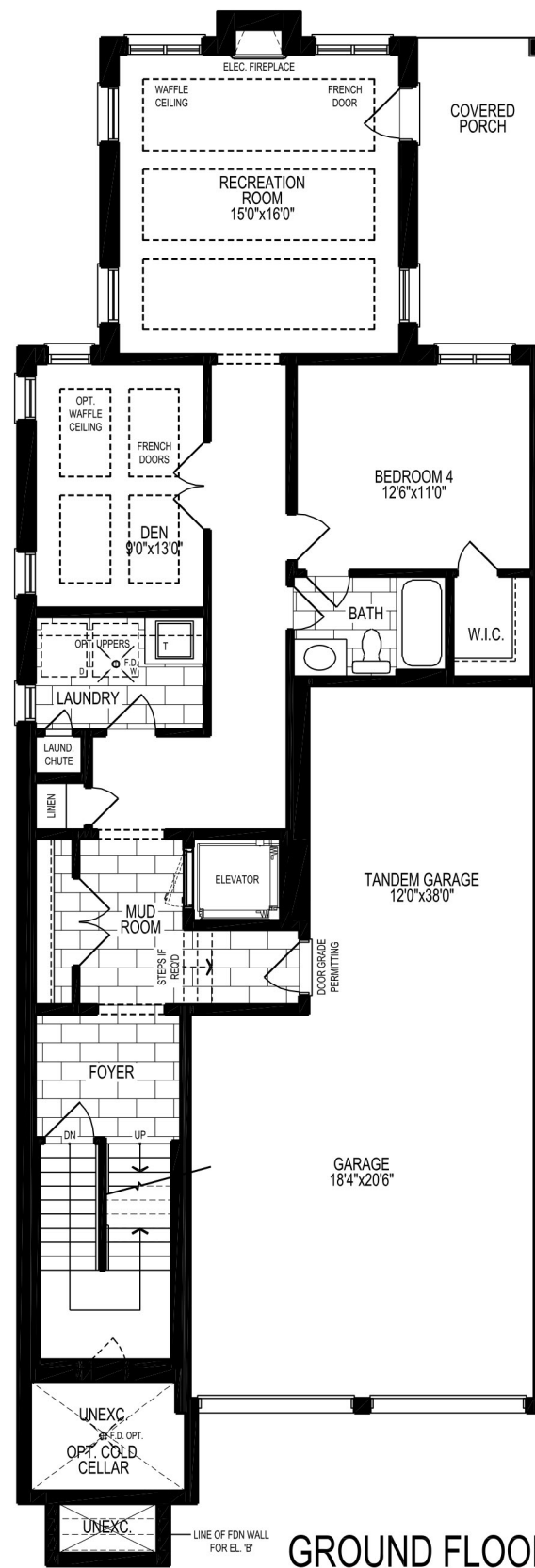
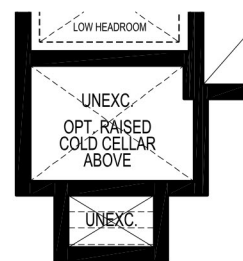


Elev. A, 4637 sq.ft.
Elev. A, Opt. 4358 sq.ft.

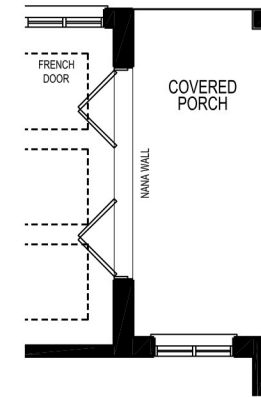


BASEMENT PLAN, ELEV. 'A'

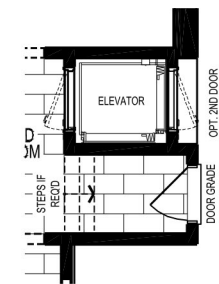
PART. BASEMENT PLAN, ELEV. 'B'



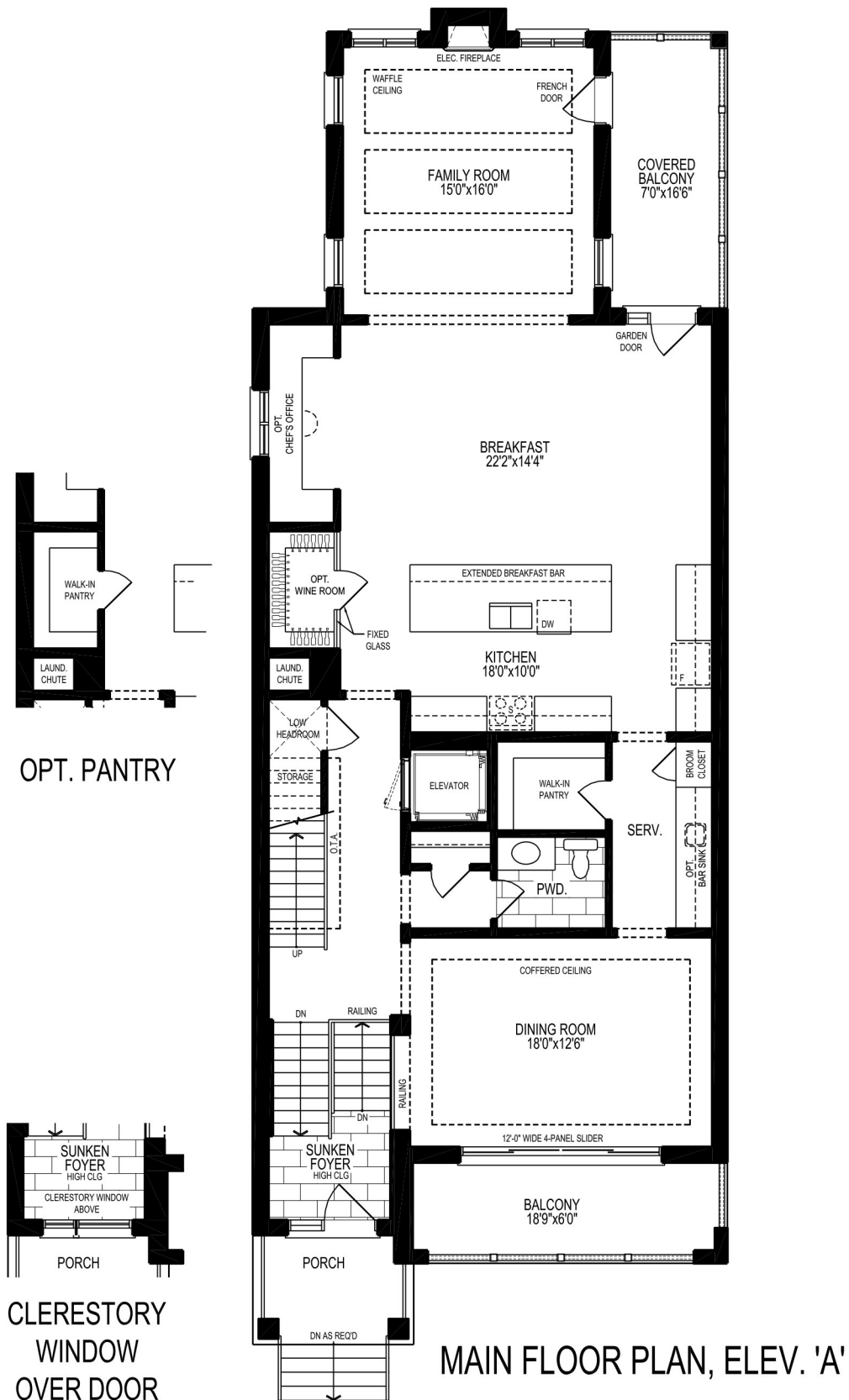
GROUND FLOOR PLAN, ELEV. 'A' & 'B'



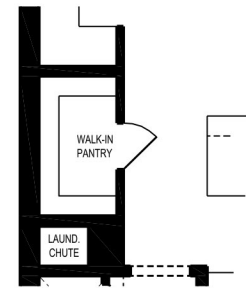
OPT. NANA WALL TO PORCH



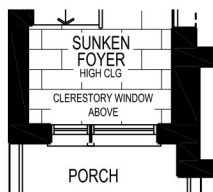
OPT. 2ND DOOR TO ELEVATOR



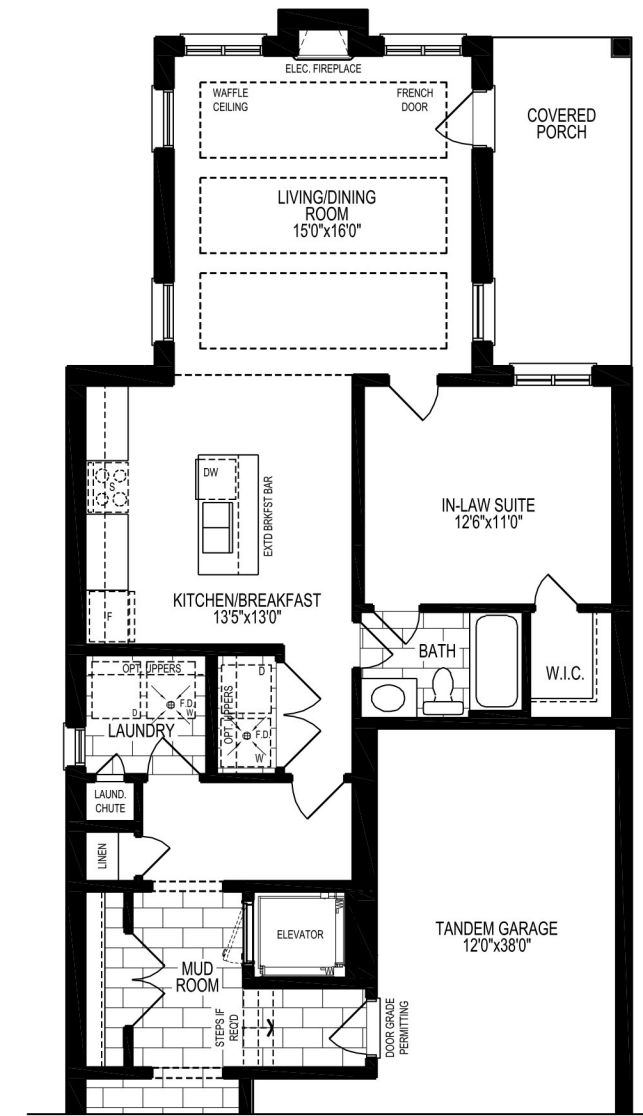
MAIN FLOOR PLAN, ELEV. 'A'



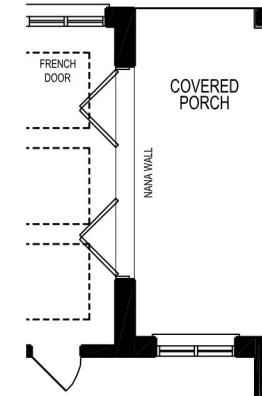
OPT. PANTRY



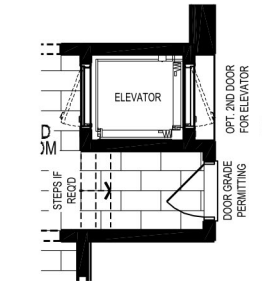
CLERESTORY WINDOW OVER DOOR



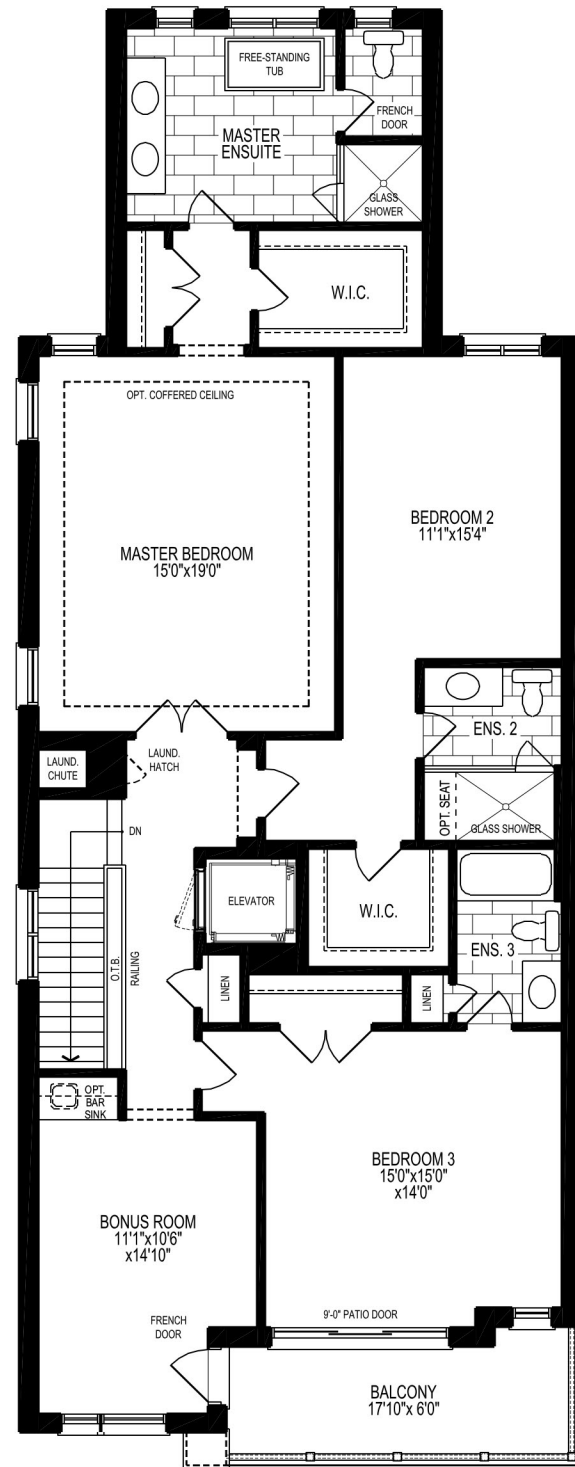
OPTIONAL GROUND FLOOR PLAN, ELEV. 'A' & 'B', W/ IN-LAW / NANNY-SUITE



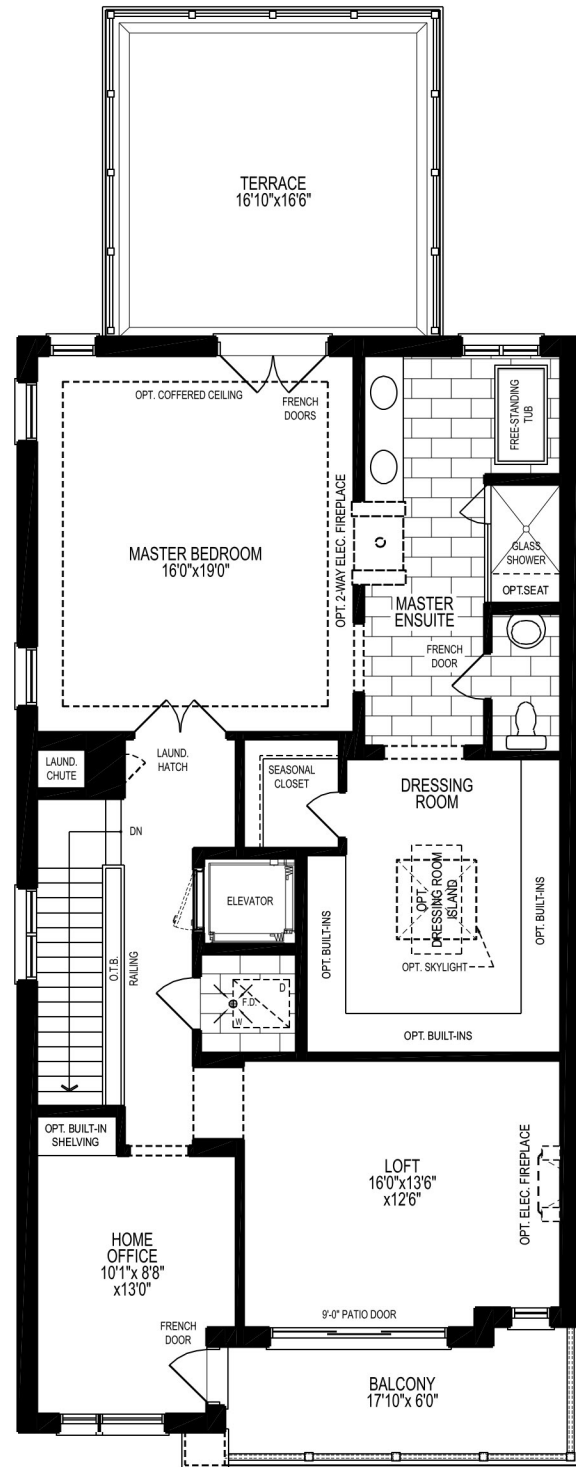
OPT. NANA WALL TO PORCH



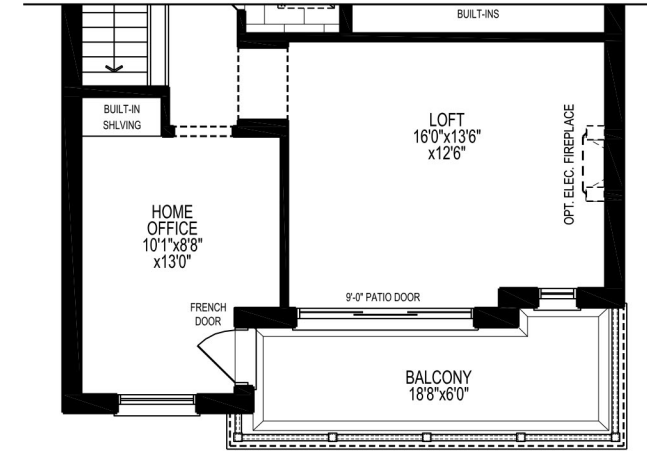
OPT. 2ND DOOR TO ELEVATOR



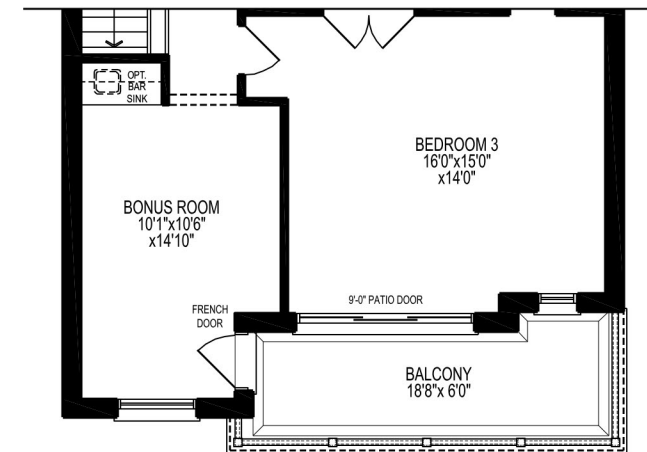
THIRD FLOOR PLAN, ELEV. 'A'



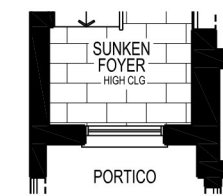
OPT. THIRD FLOOR PLAN, ELEV. 'A'



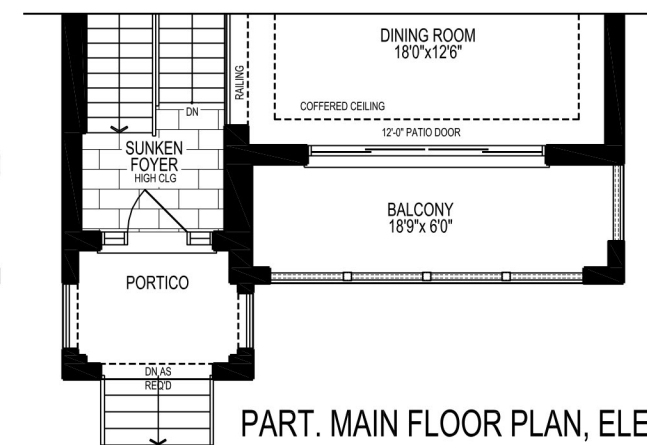
PART. OPT. THIRD FLOOR PLAN, ELEV. 'B'



PART. THIRD FLOOR PLAN, ELEV. 'B'



CLERESTORY WINDOW OVER DOOR



PART. MAIN FLOOR PLAN, ELEV. 'B'